
Kaosweaver

Version 1.3.2

Released October 1st 2003

Σ^{expert}Breadcrumbs



A Dreamweaver Extension

- Sitewide navigation tool for websites
- Centralized CSS and JavaScript files
- Control the navigation trail names sitewide
- Subdomain support

Table of Contents

Introduction	3
Installation	4
Setup Breadcrumbs	5
Working with templates	10
Setup folder name list	13
Working with CSS	15
Site structure considerations	16
Advanced manual editing	18

Introduction

Breadcrumbs are a term used to describe a simple navigation system on web sites. It is a representation of the site structure with each folder linked by using the current web page's location.

Breadcrumbs are not where you've been, instead, breadcrumbs are where you're at. When navigating on a site which utilizes breadcrumbs, the trail represents the path to get to the home page. Keep in mind that, often, a site link to another part of the site will alter the breadcrumb trail accordingly. In this product, the trail refers to the path and not the history of where the browser has visited.

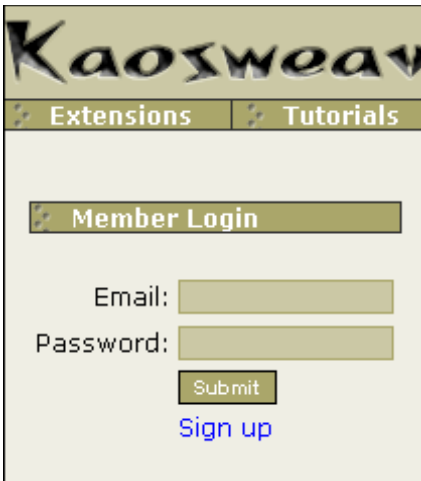
Expert Breadcrumbs works with Macromedia Dreamweaver v4, MX and MX2004. It will work with templates in a templated page and it will work in the template itself. Expert Breadcrumbs uses Cascading Style Sheets (CSS) to control the look of the individual elements. The CSS is a site wide control so updates to the central CSS will update the entire site. Expert Breadcrumbs also includes a feature which will allow the trail to substitute folder names with user friendly names throughout the site. Again, this folder name swap is done centrally within the site. It is done once and uploaded and the entire site reflects the change automatically.

Installation

Expert Breadcrumbs is delivered via email from the Kaosweaver site. In order to receive the product, log into your account at Kaosweaver by visiting:

<http://www.kaosweaver.com/members/>

and entering your purchase email address (the one you used when you purchased the product) and the password for our site.



Kaosweaver login

If you've forgotten your password, please visit the password reminder page by entering your best guess first. This will take you to the failed login page where you can have your password emailed to you.

Please insure kaosweaver@kaosweaver.com is not on any spam filtering list your email account has, most email

spam guards have a whitelist, put our email domain on this list as we do not respond to spam filter challenges.

After you have logged in you will need to select the extension to have it emailed to you. Select it by clicking on it on the left side of the page.



Extension Delivery List

select the location where the MXP file was saved from the email delivery. If you had Dreamweaver open while doing this, you will need to exit Dreamweaver and re-load Dreamweaver to complete the installation process.

Expert Breadcrumbs is found under the Command menu and the Kaosweaver.com sub menu. The Breadcrumbs Folder Utility is also found here. Expert Breadcrumbs requires a page to be loaded, saved and part of a site prior to working. Breadcrumbs Folder Utility only works on a page that Expert Breadcrumbs is already on.

Once you have the Expert Breadcrumbs file received it will need to be installed into your Dreamweaver product. This can be done multiple ways, the quickest is by double clicking on the extension file and this will load Macromedia's Extension Manager which will then install the product. The alternate way is to load the Extension Manager and use the File menu to select Install Extension..., then

Setup Breadcrumbs

To setup a breadcrumb navigation trail on your site, open a page that is already part of the site or create a new page for the site, save the page within the site. Place the cursor on the page where you want the trail to appear. At this point, select the Command Menu followed by the Kaosweaver.com submenu and finally Expert Breadcrumbs. This will open up Expert Breadcrumbs with these options:



The Expert Breadcrumbs screenshot

Fill out the Home Page Name for the name you want at the beginning of the Breadcrumb Trail. Home is the typical entry here but you can enter whatever you like, in the about example screen shot, we kept with Home. This option will allow non English based sites to have a localized link for the home page as well.

The Delimiter is the separator between the trail links.

You can enter text or use the Browse... button to select an image. Please note, the image will display the image path. Editing the image path will break the delimiter portion of the breadcrumb trail.

If you would like to use an alternate page title on this page, change the Page Title entry. If this entry is left alone, the document's title (which can be edited later) will be used. Entering something in this field or editing the field will change the display to show this information instead of what is in the document title property for the page.

To put the page title on the following line, regardless of if you've changed it in the prior entry, check the Page Title On New Line checkbox.

The breadcrumb trail displays from the left to the right, from Home to folders to page title as the default. If the trail needs to be displayed from right to left – starting with the page title, then folders and ending with home, check the Breadcrumb Trail Right to Left. Please note, this only reverses the order of the trail, it does not reverse the trail items themselves (in other words, it is still 'Home' and not 'emoH')

The extension requires the default folder file name so it can correctly link to the files and will display the trail properly (for more detail on this, see chapter 6 on site structure). Enter the default file for your site in the Default Folder File Name entry. The default file is usually index.xxx where the .xxx is .html, .htm, .php, .asp, .cf, and so on. This file will need to be in every folder that is within the site that uses a breadcrumb trail navigation.

For sites that need the trail to start about the root of the site, the last entry Start Subfolder Depth, is what needs to be set to control this. In your standard website URL you have a number of slashes, that number is what is put here. For instance:

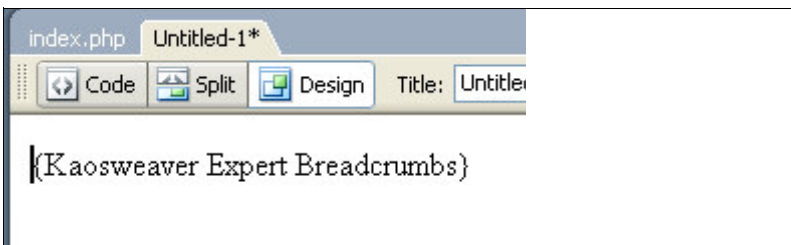
<http://www.kaosweaver.com/>

has three slashes, so the entry is 3, which is also the default. For:

<http://www.kaosweaver.com/subfolder/>

has four slashes, so the entry is 4. The system will not allow entries less than three.

Once all of the entries have been completed as needed, clicking OK will put the breadcrumb marker on the page, link to the centralized JavaScript file and the centralized CSS file. If the page already had links to these, they will not be replaced or overwritten. In the design view for Dreamweaver, a visual marker where the trail will be is like so:



Visual reminder of where the breadcrumbs are on the page

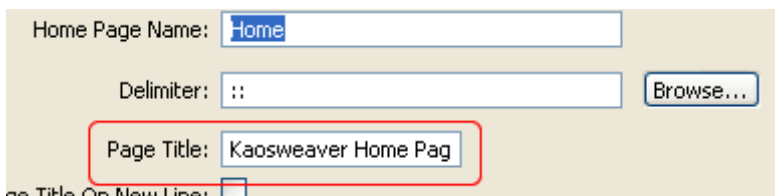
If you preview the page, the trail will look incorrect or provide errors. This is normal. The trail is setup to work on the server and not locally. When you push the file, the JavaScript file and the CSS file to the server and view it there, the display will reflect the correct Breadcrumb trail for the page.

Working With Templates

Dreamweaver comes with the useful template functionality and Expert Breadcrumbs was built to handle working with and in templates. Several important notes are in this chapter in regards to the use with templates, please read this all the way through as we will answer the most commonly asked questions for working with templates here.

Setting up Expert Breadcrumbs in the template file.

Setting up a template page to use Breadcrumbs is identical to using it in a regular page with one exception.



Home Page Name:

Delimiter:

Page Title:

Page Title On New Line: ☒

Do not change the Page Title in a template page!

Do not change the Page Title entry unless you want every page that uses the template to have the same page title.

Expert Breadcrumbs will function as expected in this setup in the template. If you require editing the individual names of the pages on select pages the editable region in Dreamweaver 4 will manually need to be created or use the doctitle editable region to manually set the page name. In Dreamweaver MX and MX2004, a

separate editable region (head) is automatically created within the template. To add a specific title for a page that is templated, in the editable region after the link to the JavaScript file, add these lines:

```
<script>  
KW_uTitle="your New Title Here";  
</script>
```

```
<!DOCTYPE HTML PUBLIC "-//W3C//DTD HTML 4.01 Transitional//EN  
"http://www.w3.org/TR/html4/loose.dtd">  
<html>  
<head>  
<!-- TemplateBeginEditable name="doctitle" -->  
<title>Untitled Document</title>  
<!-- TemplateEndEditable --><meta http-equiv="Content-Type" c  
<link href="/kaosjs/kw_breadcrumbs.css" rel="stylesheet" type  
<script src="/kaosjs/kw_breadcrumbs.js"></script>  
<!-- TemplateBeginEditable name="head" -->  
<script>  
KW_uTitle="your New Title Here";  
</script>  
<!-- TemplateEndEditable -->  
</head>
```

Example placement of the custom title in a MX/2004 template.

Replacing "your New Title Here" with the title you want the page to display. It is critical this line is *after* the JavaScript link to the Expert Breadcrumbs JavaScript. This link looks like:

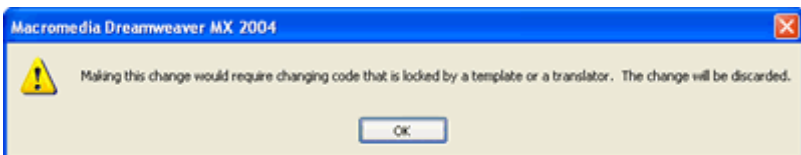
```
<script src="/kaosjs/kw_breadcrumbs.js"></script>
```

Placing it before the link will end up causing the current

document title to be used instead of the replacement one. This is the same procedure for Dreamweaver MX and MX2004 with the exception of the location of the inserted script. It can be placed within another `<script>` tag provided that it doesn't have the `src` property or is before the link to the Expert Breadcrumbs script.

Setting up Expert Breadcrumbs within a Templated page.

Setting up Expert Breadcrumbs in Dreamweaver MX and MX2004 is almost identical to a normal page. In Dreamweaver v4 it will do things a little different, but it should operate the same way. In MX and MX2004, the script will be put in the editable region labeled 'head' whereas in Dreamweaver v4 it will go in the region for the 'doctitle'. The most important thing in getting the Expert Breadcrumbs to work on a templated page when first making a templated page is to save the page, close the page, then reload it. Macromedia doesn't record the templated regions correctly when the page is first turned into a templated page. If you do so, you'll get this error:



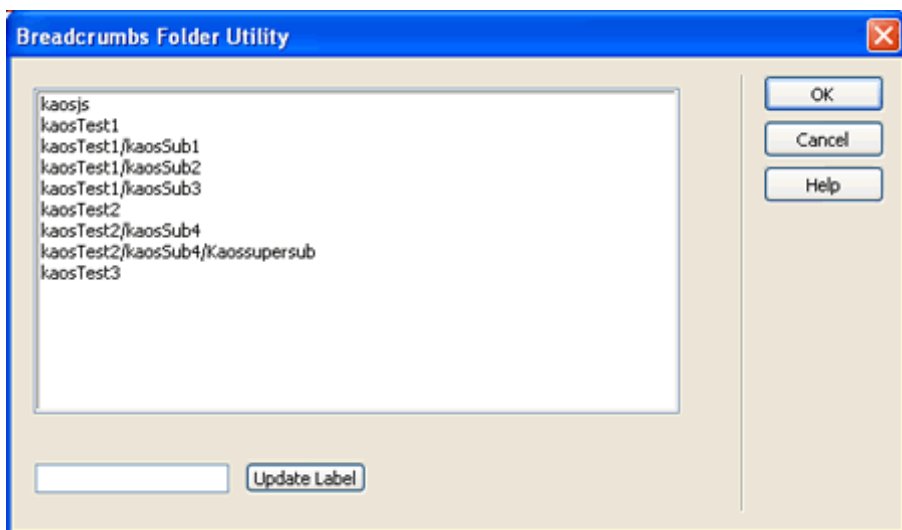
Error message popup when a templated page isn't saved.

To get by this error, save the page after applying the template to it, close the page, then reload it. It will work.

Set Up Folder Name List

One of the big advances in the Expert Breadcrumbs is the built in site wide folder name list. This utility allows the replacement of folder names with user friendly names. Some important notes exist on the use of this utility and the biggest important note is identically named folders are treated as if they were the same folder for purposes of this utility. If the folder structure has two folders named 'xdds' in two separate locations where the resulting folder name needs to be different, one of the folders will have to be renamed.

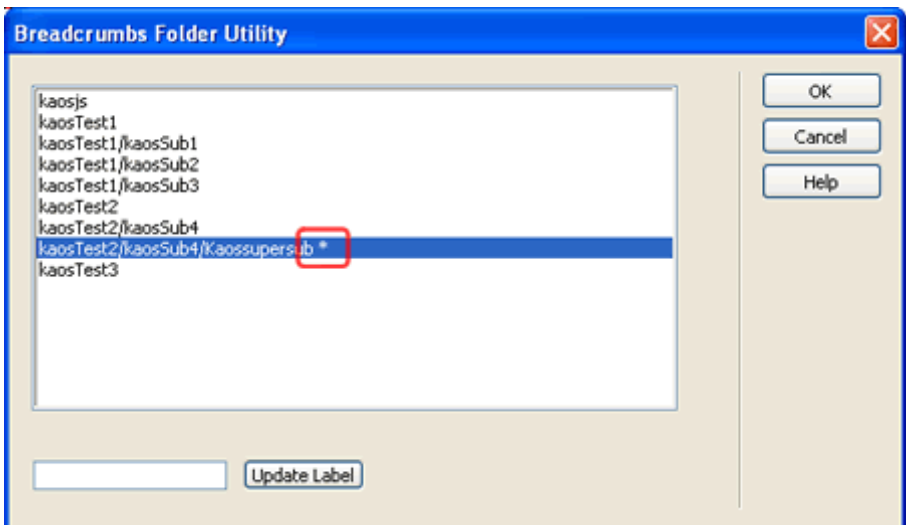
The Breadcrumb Folder Utility requires the Expert Breadcrumbs extension to have been run on the page that is open at the time the extension runs. Once Ex-



Breadcrumb Folder Utility screen shot

pert Breadcrumbs is setup, select the Breadcrumb Folder Utility and the GUI will show the complete list of folders on the site with the exception of folders which start with an underscore (this is what Macromedia uses to assist in the site functionality within Dreamweaver).

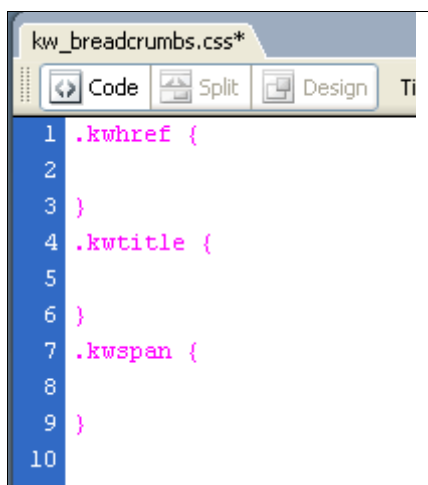
In order to update an entry, simply select the folder (which includes the path) and then enter the information in the textbox on the bottom of the page. To complete the process, click on the button 'Update Label' and then the folder will have an asterisk next to it to note it has already been set. When editing the current list, the asterisk will also be preset in accordance to what has already been done. Clicking OK will write the entries to the shared JavaScript file and, once uploaded, will update all of the pages on the site.



After entering a value in the textfield and clicking on Update Label, an asterisk * appears!

Working with CSS

Expert Breadcrumbs uses styles to control the look of the breadcrumbs. Three styles are saved in the `kw_breadcrumbs.css` file found in the `kaosjs` folder off of the root of the site. In this file, you will find three classes which can be edited.



The three styles are `kwhref` which is for the actual trail of linked breadcrumbs, `kwtitle` which is for the title, which is not a link and finally `kwspan` which is for the delimiters, provided they are the text delimiters. The `kwspan` class will not affect any image delimiters.

Original CSS Styles for Expert Breadcrumbs

The `kwhref` style is applied to the `<a href>` tag so you can control the underline for links this way. You can edit these manually or you can use the Dreamweaver built in CSS editing tool (or your own separate tool for editing CSS files). Keep in mind, all changes to these styles will change all of the Expert Breadcrumbs on the site making it very easy to change the site with updating this one file.

Site Structure Considerations

Breadcrumbs are built upon the site structure and a well organized hierarchy will make the breadcrumbs an important and useful navigation tool for the site. The site needs to be structured to take advantage of the breadcrumbs features.

Local Files	Type
Site - Testing HTML (C:\...	Folder
+ kaosjs	Folder
- kaosTest2	Folder
- kaosSub4	Folder
Kaossup...	Folder
- kaosTest1	Folder
kaosSub3	Folder
kaosSub2	Folder
kaosSub1	Folder
kaosTest3	Folder
untitled.htm	HTML Docum...

If a site is being converted, this will be a little difficult as the files could be all lumped together in the root of the site or could be lumped by general category as opposed to a well thought out structure. To illustrate this site structure we will use a

A Site with STRUCTURE!

general internet warehouse type store. From the home page (the only file in the root of the site) we would have several folders. The first would be products, followed by service, aboutus, and credit. In each of those folders we would have the default file as entered into the extension, with the typical being index.xxx where xxx is the server type or html or htm depending on the needs of the site. Under products, we would have several folders as well, food, furniture, electronics, jewelry, automotive and so on. Under each of those folders we

would have the same default file. Now, however, we could also have individual separate files as well as additional folders. For instance, under food, we could have an other.html page and two folders, perishable and non_perishable. Again each would have its own default page (index.xxx) plus as many pages as was needed. At this point, the perishable folder's index.xxx page would have a breadcrumb trail like so:

Home :: food :: Perishable Title

If we had a separate page for dairy products under the perishable folder named dairy.html – in the same folder as the index.xxx file for the perishable folder, it would have this breadcrumb trail:

Home :: food :: perishable :: Dairy Title

Even though we have both the index.xxx and dairy.html page in the same folder, the index.xxx page doesn't get the perishable breadcrumb trail because it would end up linking to itself.

As can be seen, the site structure will determine just how useful the breadcrumb trail navigation will be.

Advanced Manual Editing

Expert Breadcrumbs has a lot of built in features which can all be handled from the GUI when setting up, however, sometimes, getting into the source code is useful. This chapter will go over the function calls for Expert Breadcrumbs, break down the parameters and detail how to make quick manual edits when changes to the breadcrumbs are needed.

First lets look at the function call which calls for the trail to be written on the page:

```
<script type="text/javascript">KW_breadcrumbs  
("Home", "::", 0, 1, "index.php", 3, 4)</script>
```

As can be guessed, several items are evident, but let's point them out anyway. The first part of the code is the `<script>` tag, this is required for the browser to know the internal code is JavaScript, removing this tag will break the Expert Breadcrumbs. The type parameter is for w3c compliance as these pages will pass any current validator tests. The next bit of code, `KW_breadcrumbs`, is the function call to the breadcrumbs function in the centralized JavaScript file. The first function parameter is "Home" and this is the name that will be used at the start of the breadcrumb trail. The next parameter is "::" and this is the delimiter for the trail. If an image was used, this will be `` which is what is needed to display the image instead of just text. Please note, the delimiter CSS will have no bearing on an image. The next parameter is 0, notice it is not surrounded by quotes. This setting

controls if the line is set upon the next line or not. Change this to 1 to change the title display option, 0 is for the same line. The next parameter is 1, again without quotes. This is for the direction of the trail. Change to 1 for left to right and 0 for right to left. Next comes "index.php" which is the name of the default file. Altering this on the page will only affect the links on this one page. Because the name of the default file is critical to the breadcrumb trail functioning, we strongly recommend not editing this entry. The last two parameters are joined. The 3 and 4 – again no quotes – are the depth of the folder list. The 3 is the default for normal domains (<http://www.someDomain.com/>) the next number is one larger always. To make the subdomain be the start, set these to 4 and 5. Please note, the kaosjs files put on the server will still need to be at the main domain level. If you're going to use the Expert Breadcrumbs on a subdomain site where you do not have access to the root of the domain, you will need to manually edit the CSS and JavaScript link paths.

Kaosweaver Expert Breadcrumbs

12468 Benson St
Overland Park, KS 66213
web:<http://www.kaosweaver.com>
email:kaosweaver@kaosweaver.com